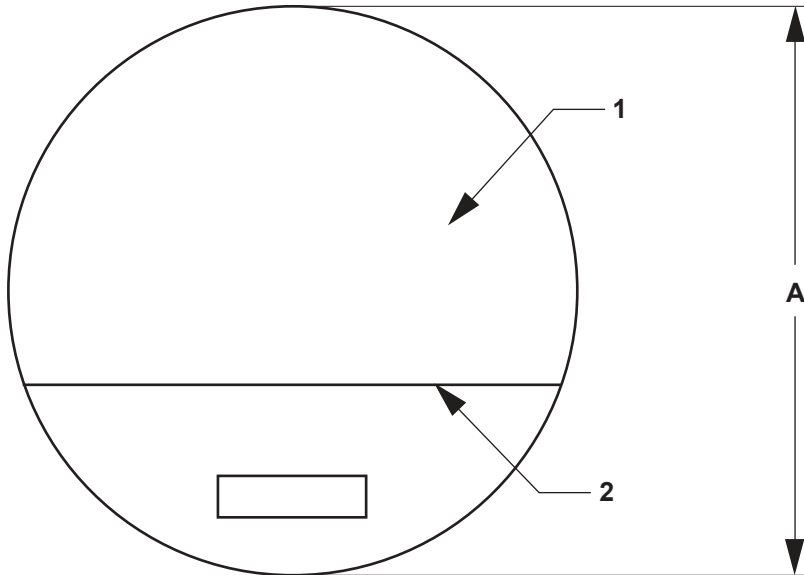


J.L. WINGERT CO.

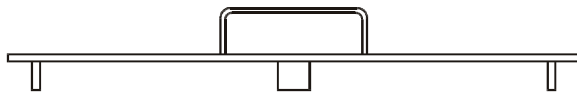
Specification Sheet HINGED STEEL COVER MODEL RC[]-CS

SS130009.G 02/17



SPECIFICATIONS

KEY	PART	DESCRIPTION
1	RC30-CS	STEEL COVER: 12 gauge carbon steel cover (for 30 gallon tank)
	RC55-CS	STEEL COVER: 12 gauge carbon steel cover (for 55 gallon tank)
	RC80-CS	STEEL COVER: 12 gauge carbon steel cover (for 80 gallon tank)
	RC100-CS	STEEL COVER: 12 gauge carbon steel cover (for 100 gallon tank)
	RC150-CS	STEEL COVER: 12 gauge carbon steel cover (for 150 gallon tank)
	RC200-CS	STEEL COVER: 12 gauge carbon steel cover (for 200 gallon tank)
	RC275-CS	STEEL COVER: 12 gauge carbon steel cover (for 275 gallon tank)
	RC360-CS	STEEL COVER: 12 gauge carbon steel cover (for 360 gallon tank)
	RC500-CS	STEEL COVER: 12 gauge carbon steel cover (for 500 gallon tank)
2		HINGE: Steel hinge welded to the cover at 1/3 the diameter



DIMENSIONS

MODEL	A	WEIGHT
RC30-CS	20 3/4" diameters	10 lbs. approx.
RC55-CS	25" diameters	19 lbs. approx.
RC80-CS	29" diameters	22 lbs. approx.
RC100-CS	30 1/2" diameters	25 lbs. approx.
RC150-CS	35 1/8" diameters	33 lbs. approx.
RC200-CS	40 1/2" diameters	38 lbs. approx.
RC275-CS	46 1/2" diameters	55 lbs. approx.
RC360-CS	52 3/4" diameters	71 lbs. approx.
RC500-CS	59 1/4" diameters	88 lbs. approx.

Note: All dimensions are +/- 1/8". All weights are approximate. All dimensions are subject to change without notice.

MANUFACTURING: Mixers, Bypass Feeders, Filter Feeders, Bromine Feeders, Sample Coolers, Sludge Traps, Separators, Separator Systems, Tank Stands, Tank Package Systems, Glycol Feed Systems, Coupon Racks, Control Stations, NEMA Enclosures, Custom Packaged Systems and Specialty Welding

P.O. Box 6207 | Garden Grove, CA 92846-6207 / 11800 Monarch St. | Garden Grove, CA 92841-2113 | Phone (714) 379-5519 | Fax (714) 379-5549
Northern California Region | Phone (510) 487-5310 | Southwest Region | Phone (602) 470-1015 | Email: customerservice@jllwingert.com

www.jllwingert.com