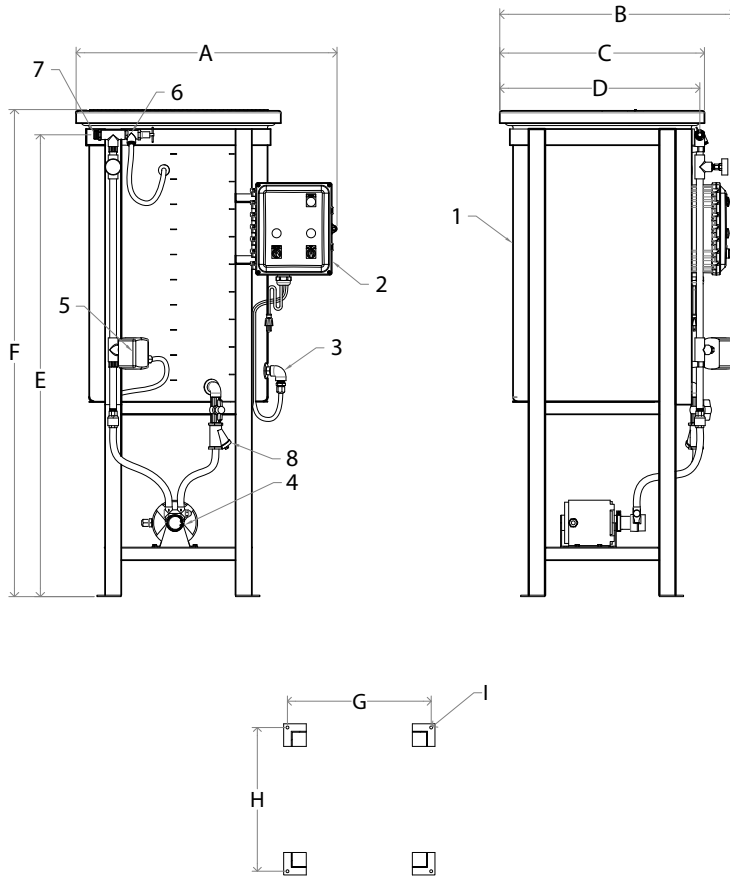


# J.L. WINGERT CO.

## Specification Sheet ECONOMY GLYCOL FEED SYSTEM MODEL GL[ ]-E[ ]-[ ]

SS161000.F 01/24



### DIMENSIONS

	GL15-E[ ]-[ ]	GL30-E[ ]-[ ]	GL50-E[ ]-[ ]	GL100-E[ ]-[ ]
<b>A</b>	25 5/8"	28 1/4"	32 3/16"	36 3/8"
<b>B</b>	22 3/8"	25"	28 15/16"	33 1/8"
<b>C</b>	17 1/8"	20 3/16"	25 1/4"	30 1/4"
<b>D</b>	18 1/8"	20 3/4"	24 11/16"	28 7/8"
<b>E</b>	44"	51 1/16"	57"	68 1/2"
<b>F</b>	46 13/16"	54 11/16"	60 1/8"	72 3/8"
<b>G</b>	14 1/8"	16 1/4"	19 1/8"	22 1/2"
<b>H</b>	14 1/8"	16 1/4"	19 1/8"	22 1/2"
<b>I</b>	3/8"	3/8"	3/8"	3/8"
<b>SHIPPING WEIGHT</b>	115 lbs	145 lbs	165 lbs	205 lbs

### SPECIFICATIONS:

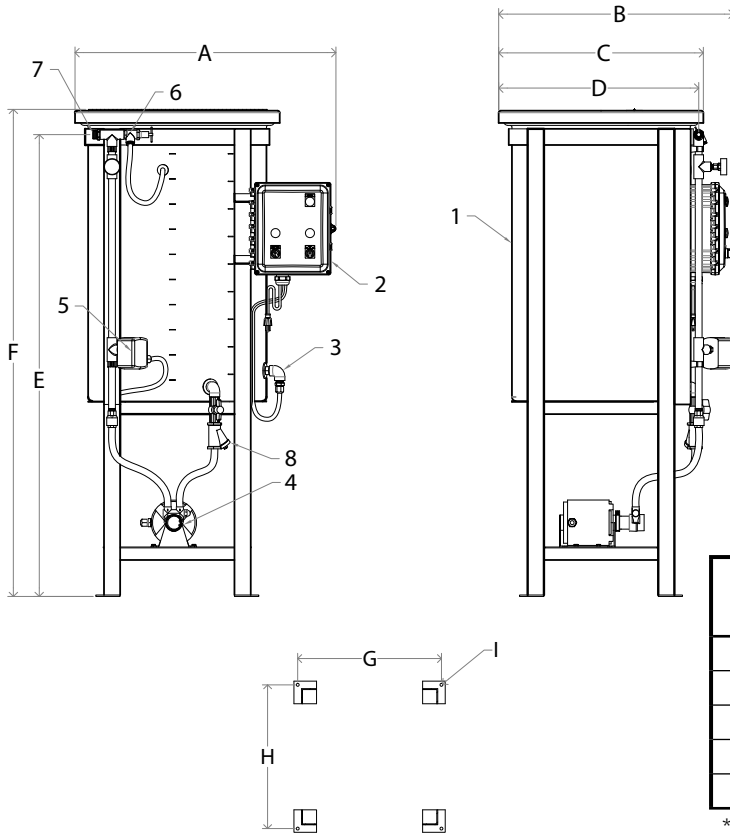
KEY	MODEL	DESCRIPTION
<b>TANK/TANK STAND:</b>		
<b>1</b>	GL15-E[ ]-[ ]	15 Gallon polyethylene tank with cover. Tank is supported and restrained by a carbon steel tank stand. Tank stand is coated with water based enamel paint.
	GL30-E[ ]-[ ]	30 Gallon polyethylene tank with cover. Tank is supported and restrained by a carbon steel tank stand. Tank stand is coated with water based enamel paint.
	GL50-E[ ]-[ ]	55 Gallon polyethylene tank with cover. Tank is supported and restrained by a carbon steel tank stand. Tank stand is coated with water based enamel paint.
	GL100-E[ ]-[ ]	100 Gallon polyethylene tank with cover. Tank is supported and restrained by a carbon steel tank stand. Tank stand is coated with water based enamel paint.
<b>CONTROL PANEL:</b>		
<b>2</b>	ALL	NEMA 4X control panel includes the following: -8ft 115VAC power cord -Main power off-on switch and green LED indicator light -Pump H-O-A switch and green LED indicator light -Red low level LED indicator light -15 Amp slow blow fuse -115VAC Auxiliary low level output
<b>LOW LEVEL SWITCH:</b>		
<b>3</b>	ALL	Polypropylene side entry low level switch with 12 Amp relay.
<b>PUMP:</b>		
<b>4</b>	ALL	1/3HP brass rotary vane pump that provides even flow against pressure. See the Pump Curves on page. 2. *Optional 1/2HP brass rotary vane pump (E2)
<b>PRESSURE SWITCH:</b>		
<b>5</b>	ALL	1/4" NPT pressure switch. See Pressure Code on page 2 for cut-in and cut-out values.
<b>PRESSURE RELIEF VALVE:</b>		
<b>6</b>	ALL	20-150 PSI brass pressure relief valve
<b>OUTLET:</b>		
<b>7</b>	ALL	3/4" MNPT
<b>SUCTION ASSEMBLY:</b>		
<b>8</b>	ALL	Black iron fittings, Brass isolation ball valve, cast iron Y-Strainer
<b>MAXIMUM PRESSURE:</b>		150 PSI (10.3 BAR)
<b>MAXIMUM TEMPERATURE:</b>		150 °F (65.5 °C)

Note: All dimensions are +/- 1/8". All weights may vary and are based on a 30# pallet. All dimensions are subject to change without notice. All volumes are +/- 10%.

MANUFACTURING: Mixers, Bypass Feeders, Filter Feeders, Bromine Feeders, Sample Coolers, Sludge Traps, Separators, Separator Systems, Tank Stands, Tank Package Systems, Glycol Feed Systems, Coupon Racks, Control Stations, NEMA Enclosures, Custom Packaged Systems and Specialty Welding

1298 N Blue Gum St, Anaheim, CA 92806 | Phone (714) 379-5519 | Fax (714) 379-5549 Northern California Region | Phone (510) 487-5310 | Southwest Region | Phone (602) 470-1015 | Email: customerservice@jllwingert.com

[www.jllwingert.com](http://www.jllwingert.com)



**MOTOR DATA**

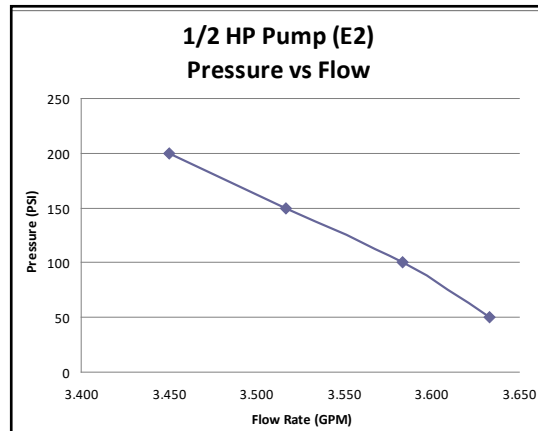
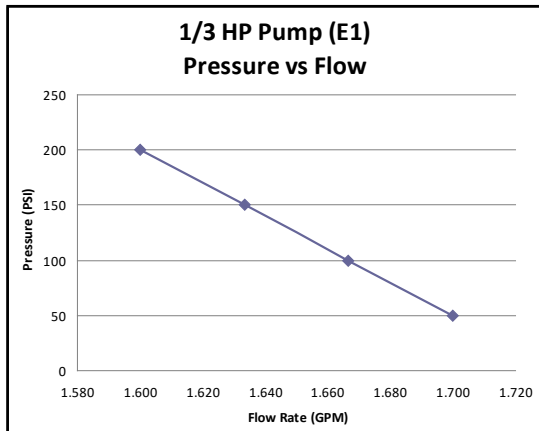
	E1	E2
<b>HP:</b>	1/3	1/2
<b>MOTOR TYPE:</b>	Split-Phase Carbonator Pump Motor	Split-Phase Carbonator Pump Motor
<b>ENCLOSURE:</b>	ODP	ODP
<b>NEMA FRAME:</b>	48Y	48Y
<b>VOLTAGE:</b>	115	100-120/200-240
<b>PHASE:</b>	1	1
<b>FULL LOAD AMPS:</b>	6.5	7.1-7.3/3.4-3.6
<b>THERMAL PROTECTION:</b>	YES	YES
<b>INSULATION CLASS:</b>	B	B
<b>SERVICE FACTOR:</b>	1	1
<b>NAMEPLATE RPM:</b>	1725	1725

PRESSURE CODE	CUT-IN RANGE (PSI)	CUT-OUT RANGE (PSI)	PRESSURE DIFFERENTIAL (PSI)
<b>1*</b>	10-45	20-60	10-30
<b>2</b>	40-80	65-100	20-40
<b>3</b>	3-10	9-30	6-20
<b>D**</b>	0-149	1-150	1-149
<b>X</b>	No Pressure Switch		

\*Code 1 is standard. Code 2 and Code 3 are available at no additional charge.  
 \*\*Code D is digital.

**OPTIONAL FEATURES**

<b>-B</b>	95 decibel audible alarm and silence switch
<b>-C</b>	Remote dry contact on low level, (PLC interface, control room alarm)
<b>-ET</b>	Expansion tank, 4.5 gallon with adjustable pressure reducing valve (Max. Pressure: 70 PSI)
<b>-CHTM</b>	High temperature copper discharge manifold with high temperature hoses
<b>-HC</b>	High level float switch with remote dry contact (PLC interface)
<b>-HN</b>	1/3 hinged cover using stainless steel piano hinge with stainless steel hardware
<b>-LPA</b>	Low pressure dry-contact alarm (Settings to be specified at time of order)
<b>-MXR</b>	TEFC, tank stand mounted mixer and ON/OFF switch
<b>-TEFC</b>	TEFC, (Totally Enclosed Fan Cooled), pump motor
<b>-OUTDOOR</b>	Outdoor rated glycol feed system, (TEFC pump, solid cover, cover is bolted to the tank)



**Note: All dimensions are +/- 1/8". All weights are approximate. All dimensions are subject to change without notice.**