

J.L. WINGERT CO.

Specification Sheet INDICATOR PACKAGE FOR RECOVERY TANK MODEL IP

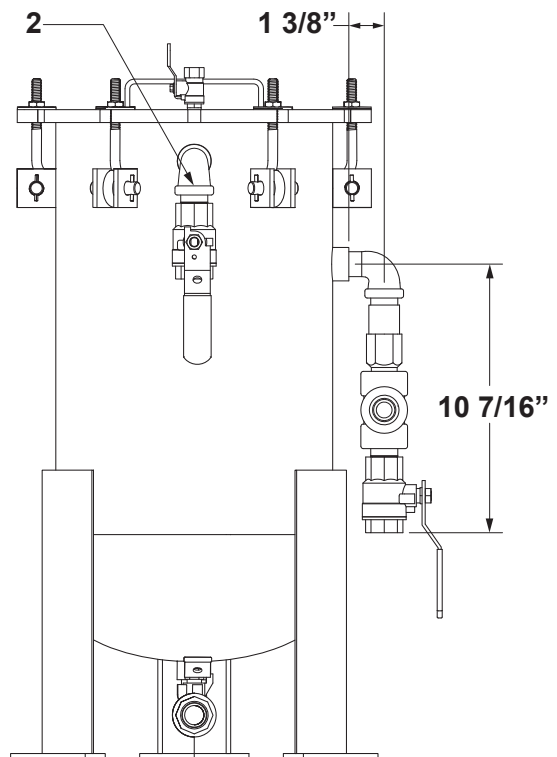
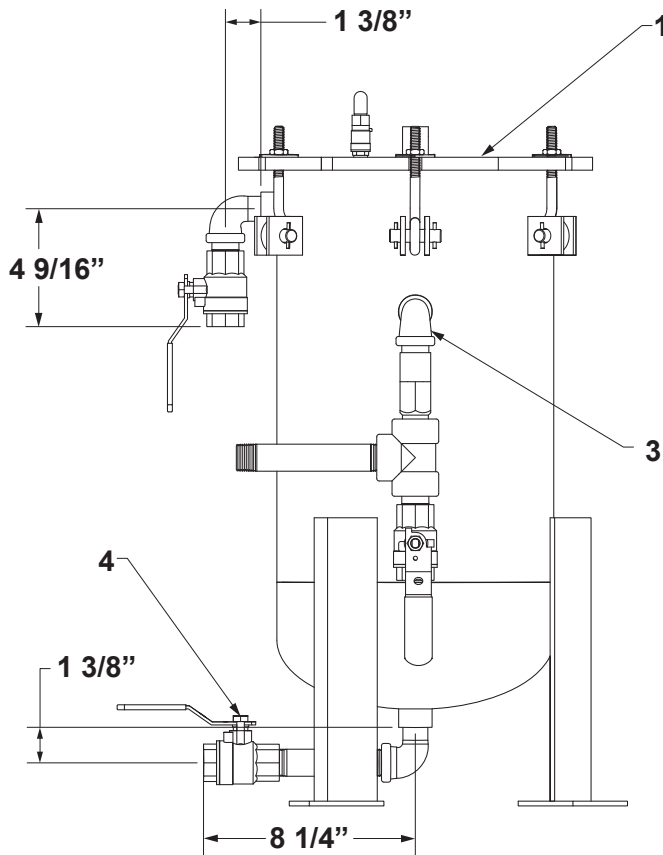
SS052258.A 03/16

SPECIFICATIONS:

KEY	DESCRIPTION
1	RECOVERY TANK: This is not included in the Indicator Package (IP). The Indicator Package can be used with either the RT-2, RT-5 or RT-10.
2	INLET ASSEMBLY: Included in the Indicator Package (IP). This is installed on the inlet of the Recovery Tank. The assembly includes a 600 psi WOG brass ball valve, street elbow and a close nipple.
3	DISCHARGE ASSEMBLY: This is included in the Indicator Package (IP). This assembly includes a 600 psi WOG brass ball valve, street elbow, close nipples, 3 GPM brass flow control valve and a brass flow switch.
4	DRAIN ASSEMBLY: This is included in the Indicator Package (IP). This assembly includes a 600 psi WOG brass ball valve, street elbow, and nipple.

DIMENSIONS:

TEMPERATURE	200° F (93° C)
PRESSURE	150 PSI (10.3 bar)



Note: All dimensions are +/- 1/8". All weights are approximate. All dimensions are subject to change without notice.

MANUFACTURING: Mixers, Bypass Feeders, Filter Feeders, Bromine Feeders, Sample Coolers, Sludge Traps, Separators, Separator Systems, Tank Stands, Tank Package Systems, Glycol Feed Systems, Coupon Racks, Control Stations, NEMA Enclosures, Custom Packaged Systems and Specialty Welding

P.O. Box 6207 | Garden Grove, CA 92846-6207 | 11800 Monarch St. | Garden Grove, CA 92841-2113 | Phone (714) 379-5519 | Fax (714) 379-5549
Northern California Region | Phone (510) 487-5310 | Southwest Region | Phone (602) 470-1015 | Email: customerservice@jllwingert.com

www.jllwingert.com