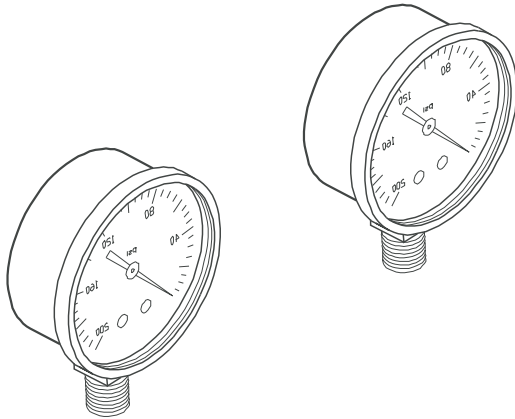


J.L. WINGERT CO.

Specification Sheet SEPARATOR PRESSURE GAUGE KITS MODELS GK-[]

SS052007.A 03/16



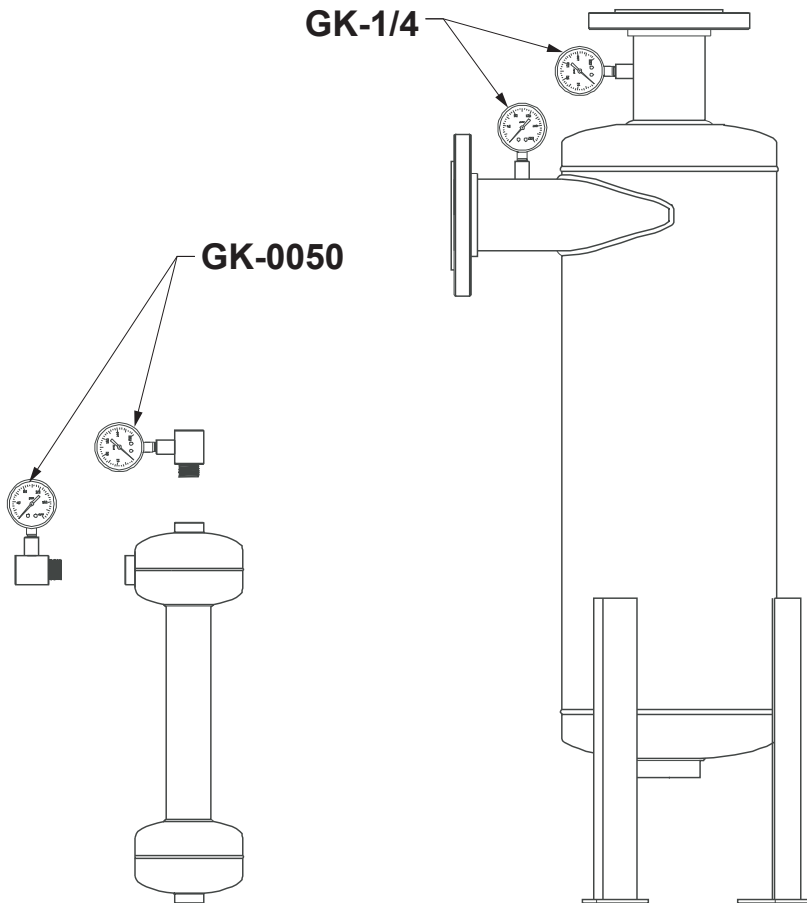
SPECIFICATIONS:

GK-[]

Pressure gauges are constructed of stainless steel or ABS casing, polycarbonate glass and either 1/4" or 1/8" brass connectors. Standard gauges are 0-200 PSI. Additional ranges are available upon request.

DIMENSIONS:

MODEL	SIZE	WEIGHT
GK-1/8	1/8" MNPT	5 lbs.
GK-1/4	1/4" MNPT	5 lbs.
GK-0050	1/2" NPT	8 lbs.
GK-0075	3/4" NPT	9.5 lbs.
GK-0100	1" NPT	10.25 lbs.
GK-0125	1 1/4" NPT	10.75 lbs.
GK-0150	1 1/2" NPT	11 lbs.
GK-0200	2" NPT	12 lbs.
GK-0250	2 1/2" NPT	13 lbs.
GK-0300	3" NPT	15 lbs.



Note: All dimensions are +/- 1/8". All weights are approximate. All dimensions are subject to change without notice.

MANUFACTURING: Mixers, Bypass Feeders, Filter Feeders, Bromine Feeders, Sample Coolers, Sludge Traps, Separators, Separator Systems, Tank Stands, Tank Package Systems, Glycol Feed Systems, Coupon Racks, Control Stations, NEMA Enclosures, Custom Packaged Systems and Specialty Welding

P.O. Box 6207 | Garden Grove, CA 92846-6207 | 11800 Monarch St. | Garden Grove, CA 92841-2113 | Phone (714) 379-5519 | Fax (714) 379-5549
Northern California Region | Phone (510) 487-5310 | Southwest Region | Phone (602) 470-1015 | Email: customerservice@jllwingert.com

www.jllwingert.com