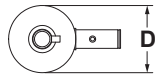
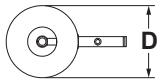


# J.L. WINGERT CO.

## Specification Sheet 1/2" TO 2 1/2" GROOVED SEPARATORS MODELS XGD-[ ]

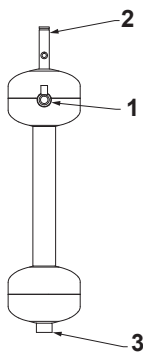
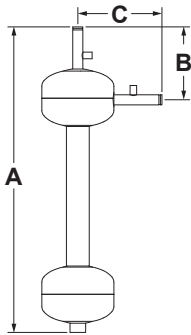
SS050009.A 03/16



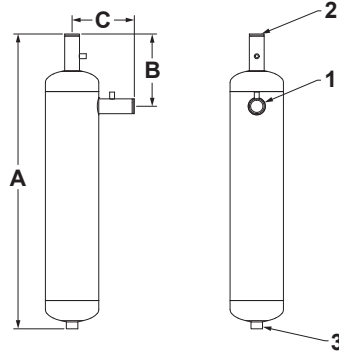
### SPECIFICATIONS:

XGD-[ ]

Body is constructed of carbon steel and painted with water based enamel.



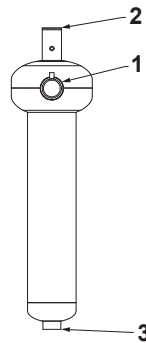
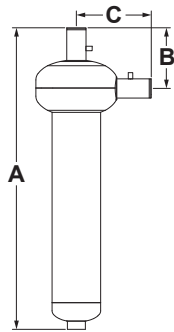
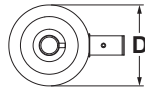
XGD-0050, XGD-0075, XGD-0100



XGD-0125, XGD-0150

### FLOW RANGE:

MODEL	4 PSI DROP	12 PSI DROP
XGD-0050	8 GPM	14 GPM
XGD-0075	14 GPM	25 GPM
XGD-0100	28 GPM	49 GPM
XGD-0125	49 GPM	84 GPM
XGD-0150	67 GPM	115 GPM
XGD-0200	90 GPM	157 GPM
XGD-0250	129 GPM	224 GPM



XGD-0200, XGD-0250

### DIMENSIONS:

KEY	XGD-0050	XGD-0075	XGD-0100	XGD-0125	XGD-0150	XGD-0200	XGD-0250
1	1/2" grooved	3/4" grooved	1" grooved	1 1/4" grooved	1 1/2" grooved	2" grooved	2 1/2" grooved
2	1/2" grooved	3/4" grooved	1" grooved	1 1/4" grooved	1 1/2" grooved	2" grooved	2 1/2" grooved
3	3/4" FNPT	3/4" FNPT	3/4" FNPT	3/4" FNPT	3/4" FNPT	1 1/2" FNPT	1 1/2" FNPT
A	25 7/16"	25 1/2"	25 7/16"	33 3/16"	33"	37 1/4"	37 1/4"
B	6 1/16"	6 1/8"	6 1/4"	8 1/8"	8 1/8"	7 1/2"	7 1/2"
C	7"	7"	7"	7"	7"	9 1/4"	9 1/4"
D	6"	6"	6"	6"	6"	10"	10"
WEIGHT	11 lbs	12 lbs	15 lbs	22 lbs	23 lbs	30 lbs	34 lbs
PRESSURE	150 PSI (10.3 bar) max						
TEMPERATURE	200° F (93° C) max						

Note: All dimensions are +/- 1/8". All weights are approximate. All dimensions are subject to change without notice.

MANUFACTURING: Mixers, Bypass Feeders, Filter Feeders, Bromine Feeders, Sample Coolers, Sludge Traps, Separators, Separator Systems, Tank Stands, Tank Package Systems, Glycol Feed Systems, Coupon Racks, Control Stations, NEMA Enclosures, Custom Packaged Systems and Specialty Welding

P.O. Box 6207 | Garden Grove, CA 92846-6207 / 11800 Monarch St. | Garden Grove, CA 92841-2113 | Phone (714) 379-5519 | Fax (714) 379-5549  
Northern California Region | Phone (510) 487-5310 | Southwest Region | Phone (602) 470-1015 | Email: customerservice@jlwingert.com

[www.jlwingert.com](http://www.jlwingert.com)