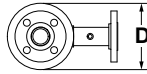
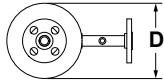


J.L. WINGERT CO.

Specification Sheet 1/2" TO 2 1/2" FLANGED SEPARATORS MODELS XFT-[]

SS050005.A 03/16



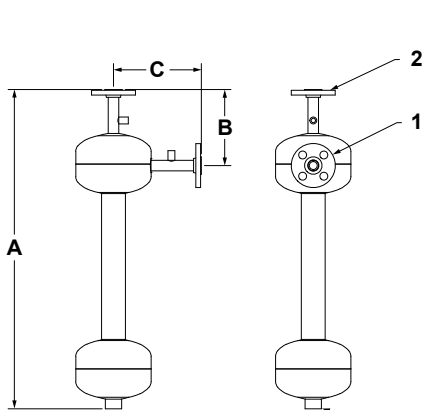
SPECIFICATIONS:

XFT-[]

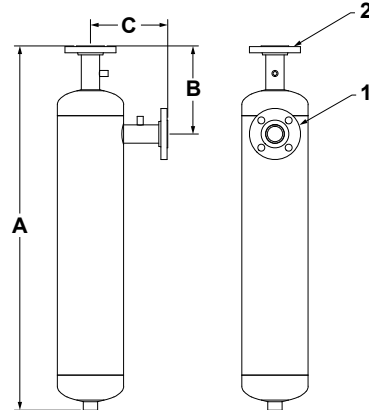
Body is constructed of carbon steel, ANSI 150# RF/SO inlet and outlet flanges and painted with water based enamel.

FLOW RANGE:

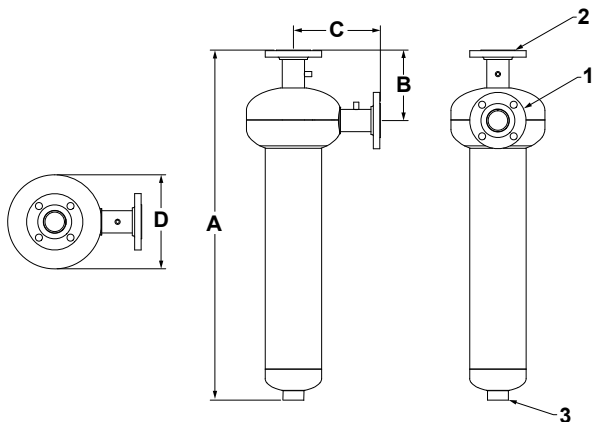
MODEL	4 PSI DROP	12 PSI DROP
XFT-0050	8 GPM	14 GPM
XFT-0075	14 GPM	25 GPM
XFT-0100	28 GPM	49 GPM
XFT-0125	49 GPM	84 GPM
XFT-0150	67 GPM	115 GPM
XFT-0200	90 GPM	157 GPM
XFT-0250	129 GPM	224 GPM



XFT-0050, XFT-0075, XFT-0100



XFT-0125, XFT-0150



XFT-0200, XFT-0250

DIMENSIONS:

KEY	XFT-0050	XFT-0075	XFT-0100	XFT-0125	XFT-0150	XFT-0200	XFT-0250
1	1/2" flanged	3/4" flanged	1" flanged	1 1/4" flanged	1 1/2" flanged	2" flanged	2 1/2" flanged
2	1/2" flanged	3/4" flanged	1" flanged	1 1/4" flanged	1 1/2" flanged	2" flanged	2 1/2" flanged
3	3/4" FNPT	3/4" FNPT	3/4" FNPT	3/4" FNPT	3/4" FNPT	1 1/2" FNPT	1 1/2" FNPT
A	25 7/16"	25 1/2"	25 7/16"	33"	33"	37 1/4"	37 1/4"
B	6 1/16"	6 1/8"	6 1/4"	8"	8"	7 1/2"	7 1/2"
C	7"	7"	7"	7"	7"	9 1/4"	9 1/4"
D	6"	6"	6"	6"	6"	10"	10"
WEIGHT	13 lbs	15 lbs	19 lbs	27 lbs	29 lbs	40 lbs	49 lbs
PRESSURE	150 PSI (10.3 bar) max						
TEMPERATURE	200° F (93° C) max						

Note: All dimensions are +/- 1/8". All weights are approximate. All dimensions are subject to change without notice.

MANUFACTURING: Mixers, Bypass Feeders, Filter Feeders, Bromine Feeders, Sample Coolers, Sludge Traps, Separators, Separator Systems, Tank Stands, Tank Package Systems, Glycol Feed Systems, Coupon Racks, Control Stations, NEMA Enclosures, Custom Packaged Systems and Specialty Welding

P.O. Box 6207 | Garden Grove, CA 92846-6207 / 11800 Monarch St. | Garden Grove, CA 92841-2113 | Phone (714) 379-5519 | Fax (714) 379-5549
Northern California Region | Phone (510) 487-5310 | Southwest Region | Phone (602) 470-1015 | Email: customerservice@jllwingert.com

www.jllwingert.com