

PARTS LIST		
KEY	ITEM	DESCRIPTION
1	INLET	6" LUG/LEVER 150# BUTTERFLY VALVE (SHIPPED LOOSE)
2	STRAINER	6" CAST IRON STRAINER WITH STAINLESS STEEL BASKET
3	PUMP	GOULDS: 55BF1M9AO 850 GPM @ 40FT TDH 15HP TEFC
4	SKID	EPOXY COATED CARBON STEEL
5	CONTROL PANEL	NEMA 4X ENCLOSURE MAIN POWER DISCONNECT MAIN POWER LED INDICATOR PUMP H-O-A SWITCH PUMP RUNNING LED INDICATOR PURGE H-O-A SWITCH SYSTEM PURGING LED INDICATOR ALARM LED INDICATOR 460VAC TO 120VAC TRANSFORMER PUMP CONTACTOR AND OVERLOAD PROGRAMMABLE PURGE CONTROLLER REMOTE START/STOP TERMINALS (24VDC) REMOTE PURGE TERMINALS (24VDC) WIRED FOR 460VAC/3Ph/60Hz
6	SEPARATOR	XFD-0500 FLOW @ 4 PSID: 554 GPM FLOW @ 12 PSID: 959 GPM
7	PURGE	1-1/2" FPT 120VAC MOTORIZED PURGE
8	DISCHARGE	5" LUG/LEVER 150# BUTTERFLY VALVE (SHIPPED LOOSE)

DRAWN	RB	1/11/2021	J.L. WINGERT CO.	
CHECKED				
MATERIAL			TITLE	
FINISH			JLW 850 GPM @ 80FT TDH SEPARATOR SYSTEM WITH STRAINER, MOTORIZED PURGE, AND ISOLATION VALVES	
MACHINED TOLERANCE: ± 0.005 INCHES			SIZE	DWG NO
FABRICATED TOLERANCE: ± 0.063 INCHES				CT-0850-40-MPK/BS-IV - Submittal
			SCALE	0.08 : 1
				SHEET 1 OF 1

Customer	Date	11.01.2021
Contact	Project	
Phone number	Project no.	
Email		

55BF1M9A0

Operating data

Pump type	Single-Stage Pumps	Fluid	Water
No. of pumps / Reserve	1 / 0	Operating temperature t A	°F 39.2
Nominal flow	US g.p.m. 850.2	pH-value at t A	7
Nominal head	ft 39.99	Density at t A	lb/ft ³ 62.4
Static head	ft 0	Kin. viscosity at t A	ft ² /s 1.689E-5
Inlet pressure	psi 0	Vapor pressure at t A	psi 14.5
Environmental temperature	°F 68	Solids	0
Available system NPSH	ft 0	Altitude	ft 0

Pump data

Make	Goulds Water Technology	Nominal	US g.p.m. 851.4	(851.4)
Speed	rpm 3600	Flow	Max- US g.p.m. 950	
No. of stages	1		Min- US g.p.m.	
Max. casing pressure	psi		Nominal	ft 40.1
Max. working pressure	psi 29.7	Head	at Qmax	ft 29.5
Head H(Q=0)	ft 69		at Qmin	ft 68.6
Weight	lb 280	Shaft power	hp 9.3	(9.3)
	Max. inch 5 1/2	Max. shaft power	hp 10.1	
Impeller R	designed inch 5 1/2	Efficiency	% 69.68	
	Min. inch 5	NPSH 3%	ft 26.7	

Shaft Seal

Type 21	Xylem
Car/Cer/Buna (Std.) [Max Temp. 212°F/100°C]	
Rotary	Carbon
Stationary	Ceramic
Elastomers	Buna-N
Metal Parts	Type 316 SS

Motor data

Specific design	3ph TEPE	Speed	3500 rpm	Insulation class	F
Electric voltage	460 V	Frame size	215JM	Colour	RAL 5010
Type	230/460V 215JM (C13A32F5BE2S)	Degree of protection	IP 55		
Rated power	15 hp	Electric current	17 A		

Remarks:

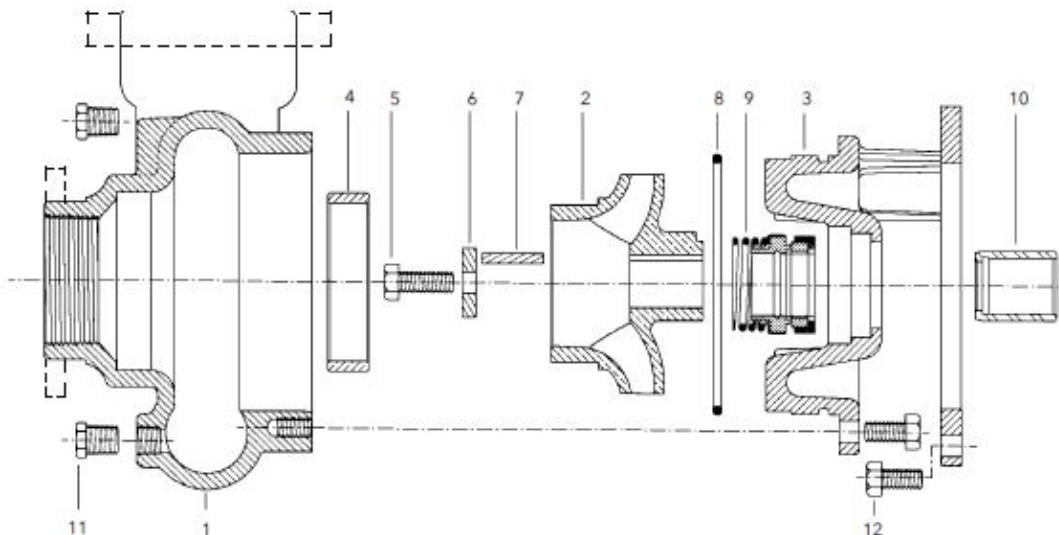
Customer	Date 11.01.2021
Contact	Project
Phone number	Project no.
Email	

55BF1M9A0

Pump Materials

1 - Casing	Cast iron ASTM A48 CL30
2 - Impeller	Sil-brass ASTM B584 C87500
3 - Motor adapter	Cast iron ASTM A48 CL30
4 - Casing wearing ring	Sil-brass ASTM B584 C87500
5 - Impeller bolt	Stainless Steel (AISI 304)
6 - Impeller washer	Stainless Steel (AISI 304)
7 - Square key way	Stainless Steel (AISI 304)
8 - O-ring	Refer Mechanical Seals
9 - Mechanical Seal	Refer Mechanical Seals
10 - Shaft sleeve	Stainless Steel (AISI 304)
11 - 1/4" pipe plug	Steel
12 - Hex head screw	Steel

MATERIALS OF CONSTRUCTION, MATERIALES DE CONSTRUCCIÓN



Remarks:



Customer	Date	11.01.2021
Contact	Project	
Phone number	Project no.	
Email		

55BF1M9A0

Hydraulic Data

Operating Data Specification		Hydraulic data (duty point)		Impeller design	
Flow	850 US g.p.m.	Flow	851 US g.p.m.	Impeller R	5 1/2"
Head	40 ft	Head	40.1 ft	Frequency	60 Hz
Static head	0 ft			Speed	3600 rpm

Power data referred to:
 Water [100%] ; 39.2°F; 62.4lb/ft³; 1.69E-5ft²/s
 Performance according to ANSI/HI 14.6 - Grade 2B

