

PARTS LIST		
KEY	ITEM	DESCRIPTION
1	INLET	3" FF 125# FLANGE
2	STRAINER	3" CAST IRON BASKET STRAINER WITH STAINLESS STEEL BASKET
3	PUMP	GOULDS 53AI1H9B0 220 GPM @ 40 TDH 3HP TEPE
4	SKID	EPOXY COATED CARBON STEEL
5	CONTROL PANEL	NEMA 4X ENCLOSURE MAIN POWER DISCONNECT MAIN POWER LED INDICATOR PUMP H-O-A SWITCH PUMP RUNNING LED INDICATOR PURGE H-O-A SWITCH SYSTEM PURGING LED INDICATOR ALARM LED INDICATOR 460VAC TO 120VAC TRANSFORMER PUMP CONTACTOR AND OVERLOAD PROGRAMMABLE PURGE CONTROLLER REMOTE START/STOP TERMINALS (24VDC) REMOTE PURGE TERMINALS (24VDC)
6	SEPARATOR	XFT-0250 129-224 GPM
7	PURGE	1-1/2" FPT 120VAC MOTORIZED PURGE
8	DISCHARGE	2-1/2" RF 150# FLANGE

DRAWN	10/7/2020
RB	
CHECKED	
QA	
MFG	
APPROVED	

J.L. WINGERT CO.

TITLE
**JLW 220GPM @ 40TDH SEPARATOR SYSTEM
 WITH MPK AND BASKET STRAINER -
 SUBMITTAL**

SIZE	DWG NO	REV
SCALE	CT-0220-40-MPK/BS - Submittal	
1 / 10		SHEET 1 OF 1

NOTE:
 ALL DIMENSIONS ARE ± 1/8" UNLESS OTHERWISE SPECIFIED.

Customer	Date	07.10.2020
Contact	Project	
Phone number	Project no.	
Email		

53A1H9B0

Operating data

Pump type	Single-Stage Pumps	Fluid	Water
No. of pumps / Reserve	1 / 0	Operating temperature t A	°F 39.2
Nominal flow	US g.p.m. 220	pH-value at t A	7
Nominal head	ft 39.99	Density at t A	lb/ft ³ 62.4
Static head	ft 0	Kin. viscosity at t A	ft ² /s 1.689E-5
Inlet pressure	psi 0	Vapor pressure at t A	psi 14.5
Environmental temperature	°F 68	Solids	0
Available system NPSH	ft 0	Altitude	ft 0

Pump data

Make	Goulds Water Technology	Nominal	US g.p.m. 219.8	(219.8)
Speed	rpm 3600	Flow	Max- US g.p.m. 381.6	
No. of stages	1		Min- US g.p.m.	
Max. casing pressure	psi		Nominal	ft 39.9
Max. working pressure	psi 19.9	Head	at Qmax	ft 22.2
Head H(Q=0)	ft 46		at Qmin	ft 45.9
Weight	lb 89	Shaft power	hp 2.4	(2.4)
	Max. inch 4 3/8	Max. shaft power	hp 2.5	
Impeller R	designed inch 4 3/16	Efficiency	% 68.17	
	Min. inch 3 5/8	NPSH 3%	ft 12.1	

Shaft Seal

Type 21	Xylem
Car/Cer/Buna (Std.) [Max Temp. 212°F/100°C]	
Rotary	Carbon
Stationary	Ceramic
Elastomers	Buna-N
Metal Parts	Type 316 SS

Motor data

Specific design	3ph TEPE	Speed	3500 rpm	Insulation class	F
Electric voltage	460 V	Frame size	182JM	Colour	RAL 5010
Type	230/460V 182JM (C09A32F5HD2S)	Degree of protection	IP 55		
Rated power	3 hp	Electric current	3.9 A		

Remarks:

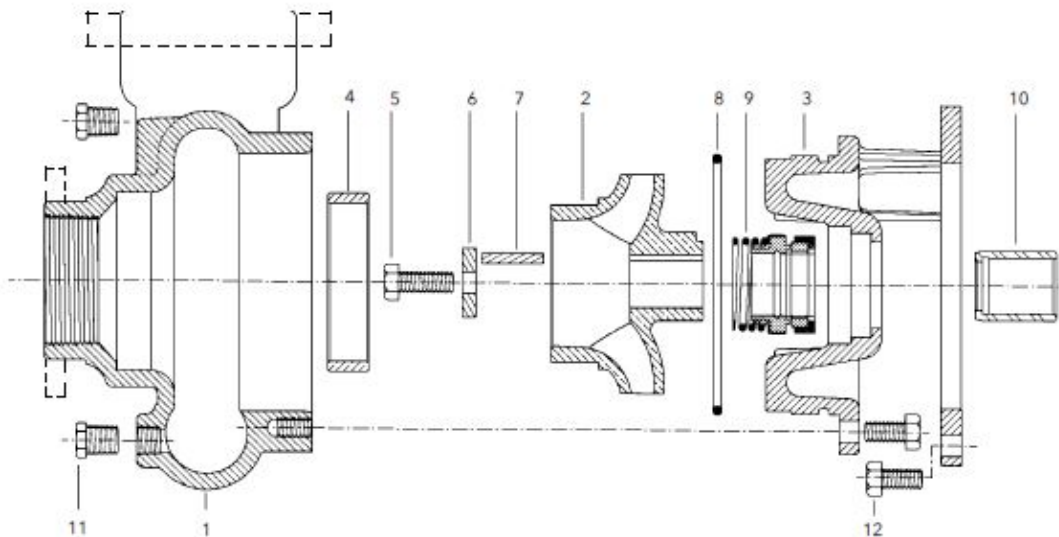
Customer	Date 07.10.2020
Contact	Project
Phone number	Project no.
Email	

53A1H9B0

Pump Materials

1 - Casing	Cast iron ASTM A48 CL30
2 - Impeller	Cast iron ASTM A48 CL30
3 - Motor adapter	Cast iron ASTM A48 CL30
4 - Casing wearing ring	Cast iron ASTM A48 CL30
5 - Impeller bolt	Stainless Steel (AISI 304)
6 - Impeller washer	Stainless Steel (AISI 304)
7 - Square key way	Stainless Steel (AISI 304)
8 - O-ring	Refer Mechanical Seals
9 - Mechanical Seal	Refer Mechanical Seals
10 - Shaft sleeve	Stainless Steel (AISI 304)
11 - 1/4" pipe plug	Steel
12 - Hex head screw	Steel

MATERIALS OF CONSTRUCTION, MATERIALES DE CONSTRUCCIÓN



Remarks:



Customer	Date	07.10.2020
Contact	Project	
Phone number	Project no.	
Email		

53A1H9B0

Hydraulic Data

Operating Data Specification		Hydraulic data (duty point)		Impeller design	
Flow	220 US g.p.m.	Flow	220 US g.p.m.	Impeller R	4 ³ / ₁₆ "
Head	40 ft	Head	39.9 ft	Frequency	60 Hz
Static head	0 ft	Head	39.9 ft	Speed	3600 rpm

Power data referred to:

Water [100%] ; 39.2°F; 62.4lb/ft³; 1.69E-5ft²/s

Performance according to ANSI/HI 14.6 - Grade 2B

