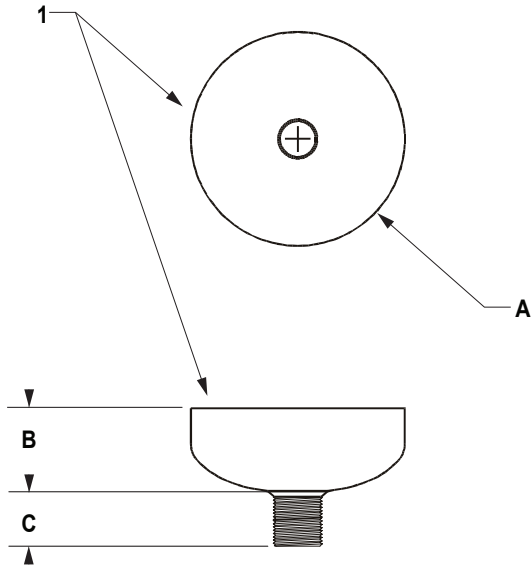


# J.L. WINGERT CO.

## Specification Sheet FILL FUNNELS MODELS 3069 (STEEL) & 3069P (PE)

SS032020.D 07/15

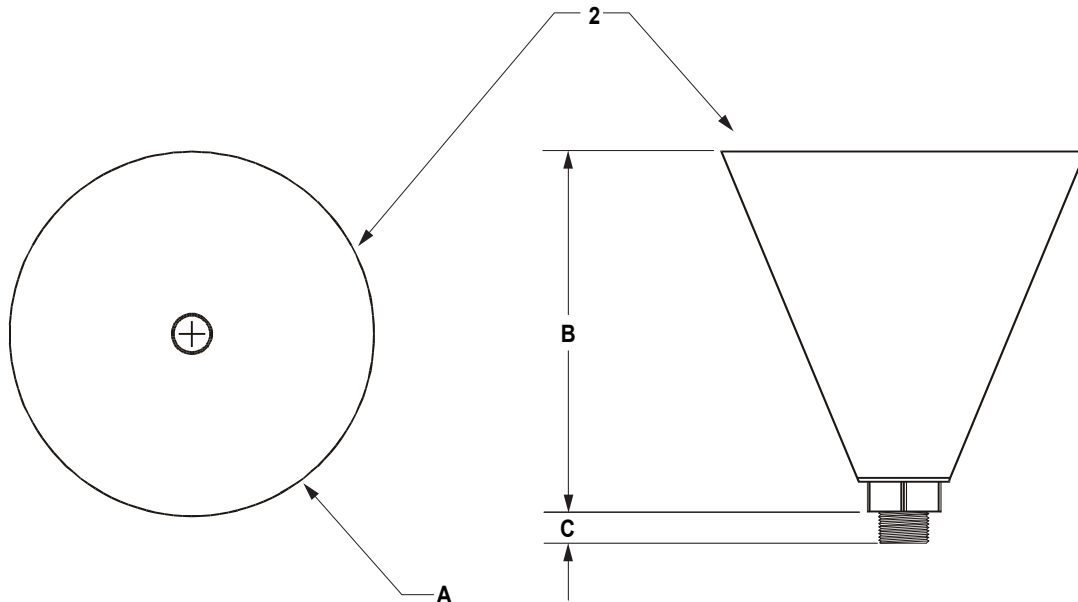


### SPECIFICATIONS

KEY	PART	DESCRIPTION
1	3069	<b>STEEL FUNNEL:</b> Constructed of 12 gauge carbon steel and 1" NPT nipple welded to bottom, funnel is painted with a water based enamel paint
2	3069P	<b>PE FUNNEL:</b> Constructed of minimum 1/4" thick, low linear, high density, blue polyethylene and completed with 1" NPT steel nipple

### DIMENSIONS

KEY	3069	3069P
A	6" diameter	10" diameter
B	2 3/8"	9 7/8"
C	1 1/2"	1 1/8"
VOLUME	.125 gallon (.47 liters)	1 gallon (3.79 liters)
WEIGHT	2 lbs. approx.	1.7 lbs. approx.
SHIPPING DIMENSIONS	6" X 6" X 4"	10" X 10" X 11"



Note: All dimensions are +/- 1/8". All weights are approximate. All dimensions are subject to change without notice.

MANUFACTURING: Mixers, Bypass Feeders, Filter Feeders, Bromine Feeders, Sample Coolers, Sludge Traps, Separators, Separator Systems, Tank Stands, Tank Package Systems, Glycol Feed Systems, Coupon Racks, Control Stations, NEMA Enclosures, Custom Packaged Systems and Specialty Welding

P.O. Box 6207 | Garden Grove, CA 92846-6207 | 11800 Monarch St. | Garden Grove, CA 92841-2113 | Phone (714) 379-5519 | Fax (714) 379-5549  
Northern California Region | Phone (510) 487-5310 | Southwest Region | Phone (602) 470-1015 | Email: customerservice@jllwingert.com

[www.jllwingert.com](http://www.jllwingert.com)