

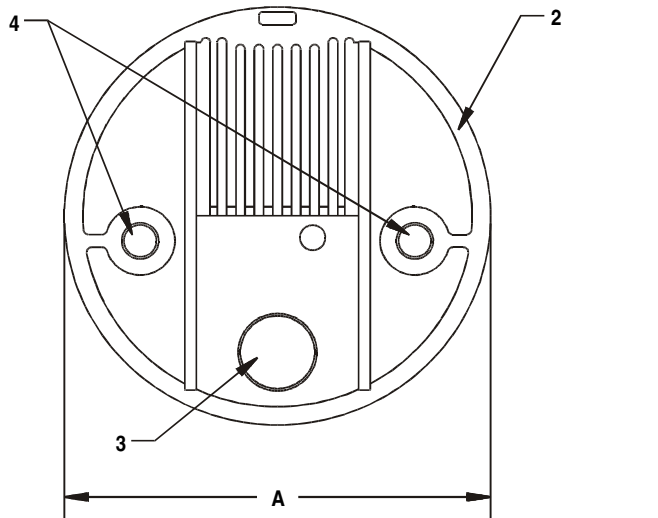
J.L. WINGERT CO.

P.O. Box 6207 • Garden Grove, CA 92846-6207 / 11800 Monarch Street • Garden Grove, CA 92841-2113
 Phone (714) 379-5519 • Fax (714) 379-5549 ■ Email: customerservice@jllwingert.com
 Northern California Region • Phone (510) 487-5310 ■ Southwest Region • Phone (602) 470-1015
 www.jllwingert.com

MANUFACTURING: Mixers, Bypass Feeders, Filter Feeders, Bromine Feeders, Sample Coolers, Sludge Traps, Separators, Separator Systems, Tank Stands,
 Tank Package Systems, Glycol Feed Systems, Coupon Racks, Control Stations, NEMA Enclosures, Custom Packaged Systems and Specialty Welding

Specification Sheet #130003 Rev. "D" (11/99)

MODEL PE[]-TPD TAPERED FLAT BOTTOM TANK

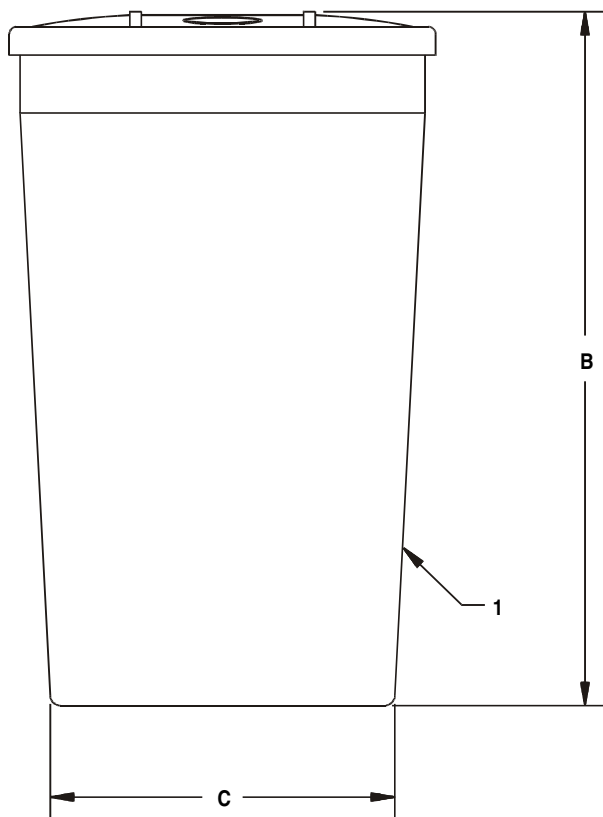


SPECIFICATIONS:

KEY	DESCRIPTION
1	TANK: Constructed of UV resistant molded white polyethylene with 5 gallon graduations
2	COVER: Molded black polyethylene with recesses for pump, agitator and liquid level switch (cover weight limit is 30 lbs.)
3	4" FILL HOLE AND PLUG
4	MOUNTING HOLES: 1 3/8" optional mounting holes for accessories

DIMENSIONS & WEIGHT:

KEY	PE30-TPD	PE50-TPD
A	23"	23"
B	24 1/2"	41 1/2"
C	19 3/8"	19 3/8"
Thickness	1/8"	1/8"
Weight	28 lbs. approx.	38 lbs. approx.



PE50-TPD MODEL SHOWN

Note: All dimensions are +/- 1/8". All weights are approximate. All dimensions are subject to change without notice.