

J.L. WINGERT CO.

P.O. Box 6207 • Garden Grove, CA 92846-6207 / 11800 Monarch Street • Garden Grove, CA 92841-2113

Phone (714) 379-5519 • Fax (714) 379-5549 ■ Email: customerservice@jllwingert.com

Northern California Region • Phone (510) 487-5310 ■ Southwest Region • Phone (602) 470-1015

www.jllwingert.com

MANUFACTURING: Mixers, Bypass Feeders, Filter Feeders, Bromine Feeders, Sample Coolers, Sludge Traps, Separators, Separator Systems, Tank Stands, Tank Package Systems, Glycol Feed Systems, Coupon Racks, Control Stations, NEMA Enclosures, Custom Packaged Systems and Specialty Welding

Specification Sheet #052211 Rev. "A" (3/99)

SEPARATOR CARBON STEEL FLANGE SPOOLS

SPECIFICATIONS:

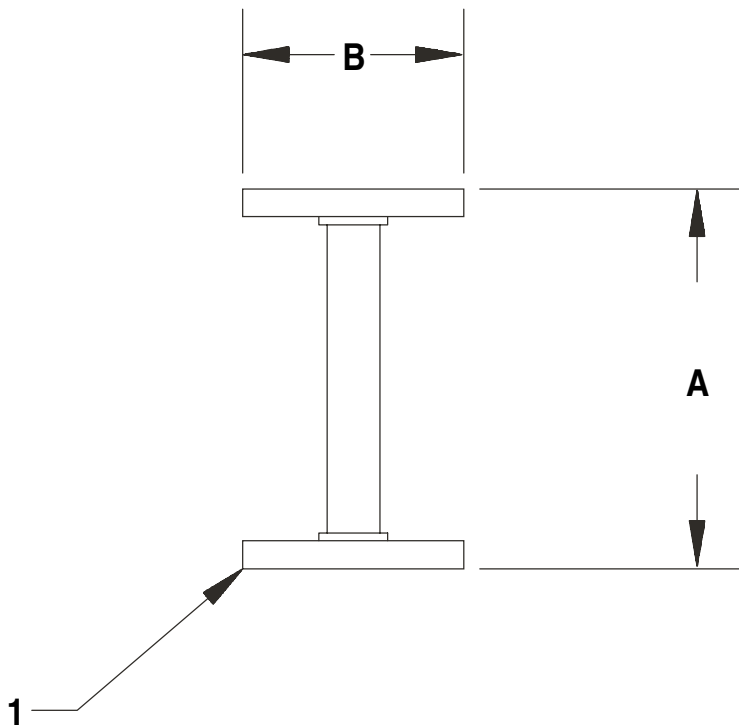
Flange spools are constructed from carbon steel ANSI 150# RF/SO flanges and Sch. 40 carbon steel pipe.

PRESSURES AND TEMPERATURES:

MAXIMUM TEMPERATURE	200° F (93° C)
MAXIMUM PRESSURE	150 PSI (10.3 BAR)

DIMENSIONS AND WEIGHTS:

MODEL	1	A	B	WEIGHT (LBS)
FS-0050	1/2"	10"	3 1/2"	6
FS-0075	3/4"	10"	3 7/8"	6
FS-0100	1"	10"	4 1/4"	7
FS-0125	1 1/4"	12"	4 5/8"	8
FS-0150	1 1/2"	12"	5"	9
FS-0200	2"	12"	6"	15
FS-0250	2 1/2"	12"	7"	24
FS-0300	3"	12"	7 1/2"	27
FS-0400	4"	16"	9"	39
FS-0500	5"	16"	10"	42
FS-0600	6"	16"	11"	54
FS-0800	8"	20"	13 1/2"	81
FS-1000	10"	22"	16"	111
FS-1200	12"	24"	19"	177
FS-1400	14"	26"	21"	240
FS-1600	16"	28"	23 1/2"	303
FS-1800	18"	30"	25"	336
FS-2000	20"	32"	27 1/2"	423



Note: All dimensions are +/- 1/8". All weights are approximate. All dimensions are subject to change without notice.