

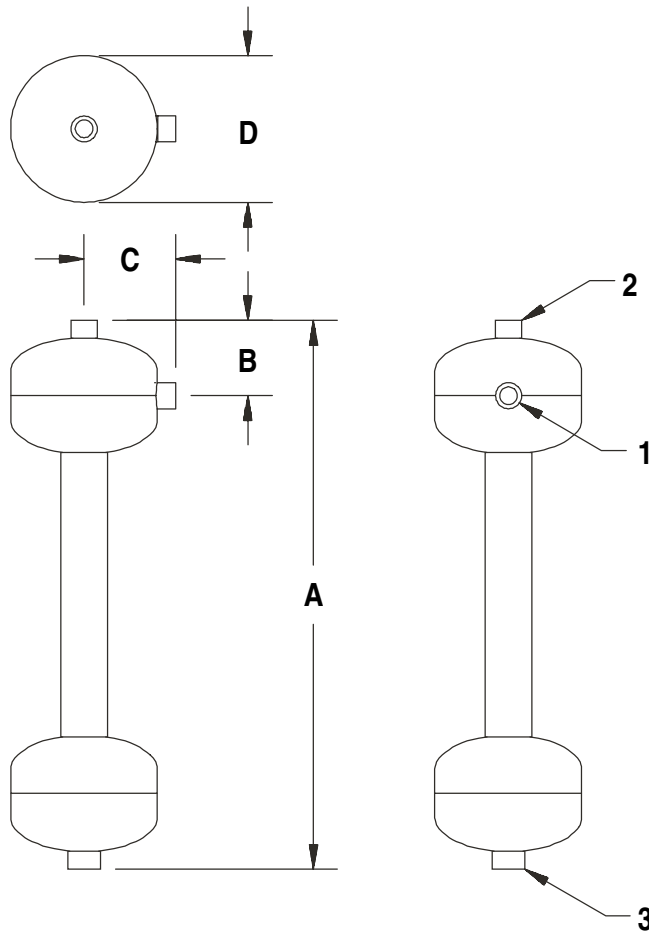
J.L. WINGERT CO.

P.O. Box 6207 • Garden Grove, CA 92846-6207 / 11800 Monarch Street • Garden Grove, CA 92841-2113
 Phone (714) 379-5519 • Fax (714) 379-5549 ■ Email: customerservice@jllwingert.com
 Northern California Region • Phone (510) 487-5310 ■ Southwest Region • Phone (602) 470-1015
 www.jllwingert.com

MANUFACTURING: Mixers, Bypass Feeders, Filter Feeders, Bromine Feeders, Sample Coolers, Sludge Traps, Separators, Separator Systems, Tank Stands,
 Tank Package Systems, Glycol Feed Systems, Coupon Racks, Control Stations, NEMA Enclosures, Custom Packaged Systems and Specialty Welding

Specification Sheet #052001 Rev. "A" (3/99)

"XTI" SERIES SEPARATORS (1/2" TO 2 1/2")



SPECIFICATIONS:

Body is constructed of carbon steel and is painted with water based enamel.

FLOW RANGE:

MODEL	4 PSI DROP	12 PSI DROP
XTI-0050	8 GPM	14 GPM
XTI-0075	14 GPM	25 GPM
XTI-0100	28 GPM	49 GPM
XTI-0125	49 GPM	84 GPM
XTI-0150	67 GPM	115 GPM
XTI-0200	90 GPM	157 GPM
XTI-0250	129 GPM	224 GPM

ACCESSORIES:

PART #	DESCRIPTION	SPEC. #
GK-[]	Inlet and outlet pressure gauge kits	052207
PK-0075	3/4" manual purge kit	052205
PK-0150	1 1/2" manual purge kit	052205
BM-[]	Wall mount brackets	052012
RL-06	Three removable legs	052013

DIMENSIONS, CUBE, WEIGHT, PRESSURE & TEMPERATURE

KEY	XTI-0050	XTI-0075	XTI-0100	XTI-0125	XTI-0150	XTI-0200	XTI-0250
1	1/2" FNPT	3/4" FNPT	1" FNPT	1 1/4" FNPT	1 1/2" FNPT	2" FNPT	2 1/2" FNPT
2	1/2" FNPT	3/4" FNPT	1" FNPT	1 1/4" FNPT	1 1/2" FNPT	2" FNPT	2 1/2" FNPT
3	3/4" FNPT	3/4" FNPT	3/4" FNPT	3/4" FNPT	3/4" FNPT	1 1/2" FNPT	1 1/2" FNPT
A	22 7/16"	22 7/16"	22 7/16"	29 7/8"	30"	34"	34 7/16"
B	3 1/8"	3 1/8"	3 1/4"	5"	5 1/8"	4 3/8"	4 7/8"
C	3 3/4"	3 3/4"	3 3/4"	3 7/8"	3 7/8"	6"	6 1/2"
D	6"	6"	6"	6"	6"	10"	10"
CUBE	6" x 6" x 24"	6" x 6" x 24"	6" x 6" x 24"	6" x 6" x 31"	6" x 6" x 31"	10" x 10" x 35"	10" x 10" x 35"
WEIGHT	12 lbs.	16 lbs.	18 lbs.	22 lbs.	22 lbs.	42 lbs.	42 lbs.
PRESSURE	150 PSI maximum (10.3 bar)						
TEMPERATURE	200° F (93° C)						

MODEL SHOWN: XTI-0050

Note: All dimensions are +/- 1/8". All weights are approximate. All dimensions are subject to change without notice.