

J.L. WINGERT CO.

P.O. Box 6207 • Garden Grove, CA 92846-6207 / 11800 Monarch Street • Garden Grove, CA 92841-2113
 Phone (714) 379-5519 • Fax (714) 379-5549 ■ Email: customerservice@jllwingert.com
 Northern California Region • Phone (510) 487-5310 ■ Southwest Region • Phone (602) 470-1015
 www.jllwingert.com

MANUFACTURING: Mixers, Bypass Feeders, Filter Feeders, Bromine Feeders, Sample Coolers, Sludge Traps, Separators, Separator Systems, Tank Stands,
 Tank Package Systems, Glycol Feed Systems, Coupon Racks, Control Stations, NEMA Enclosures, Custom Packaged Systems and Specialty Welding

Specification Sheet #032020 Rev. "C" (11/99)

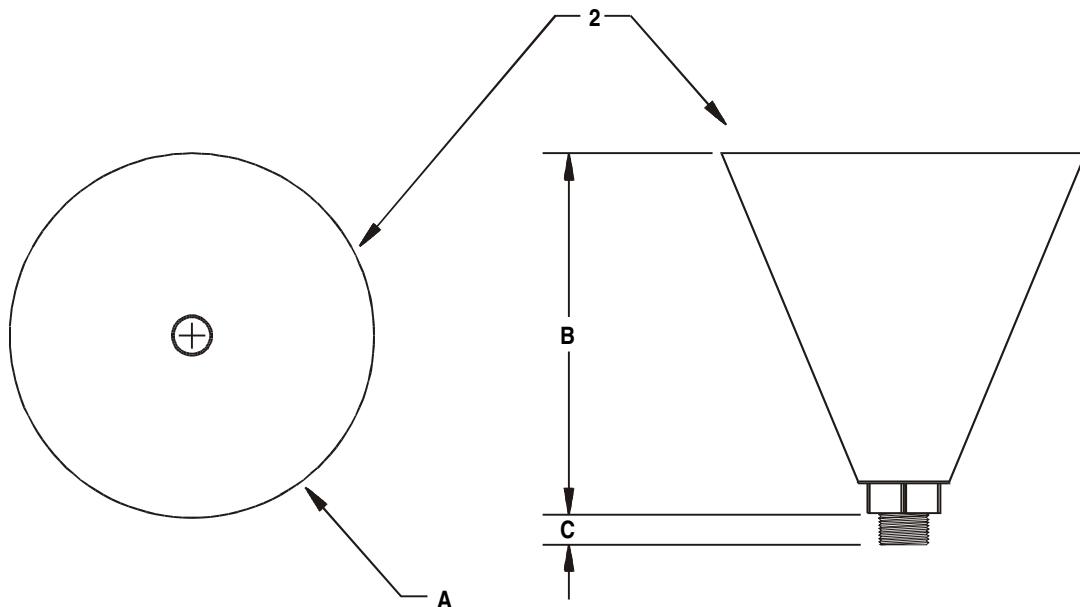
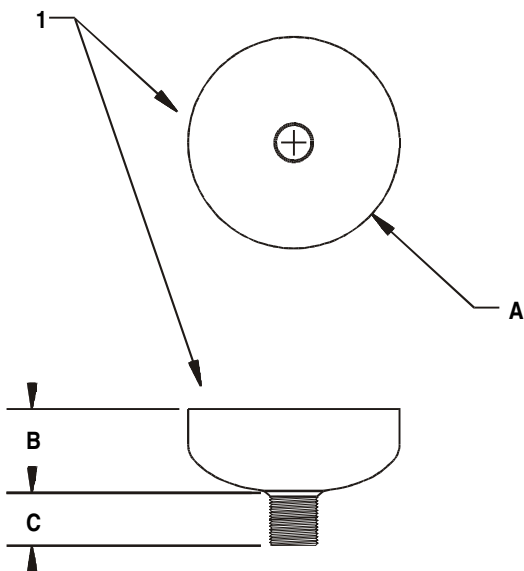
MODEL 3069 (STEEL) & 3069P (PE) FILL FUNNELS

SPECIFICATIONS:

KEY	PART	DESCRIPTION
1	3069	STEEL FUNNEL: Constructed of 12 gauge carbon steel and 1" NPT nipple welded to bottom, funnel is painted with a water based enamel paint
2	3069P	PE FUNNEL: Constructed of minimum 1/4" thick, low linear, high density, blue polyethylene and completed with 1" NPT steel nipple

DIMENSIONS, WEIGHT & CUBE:

KEY	3069	3069P
A	6" diameter	10" diameter
B	2 3/8"	9 7/8"
C	1 1/2"	7/8"
Volume	1 pint (.47 liters)	1 gallon (3.79 liters)
Weight	3 lbs. approx. (1.36 kg.)	3 lbs. approx. (1.36 kg.)
Cube	6" X 6" X 4"	10" X 10" X 11"



Note: All dimensions are +/- 1/8". All weights are approximate. All dimensions are subject to change without notice.