

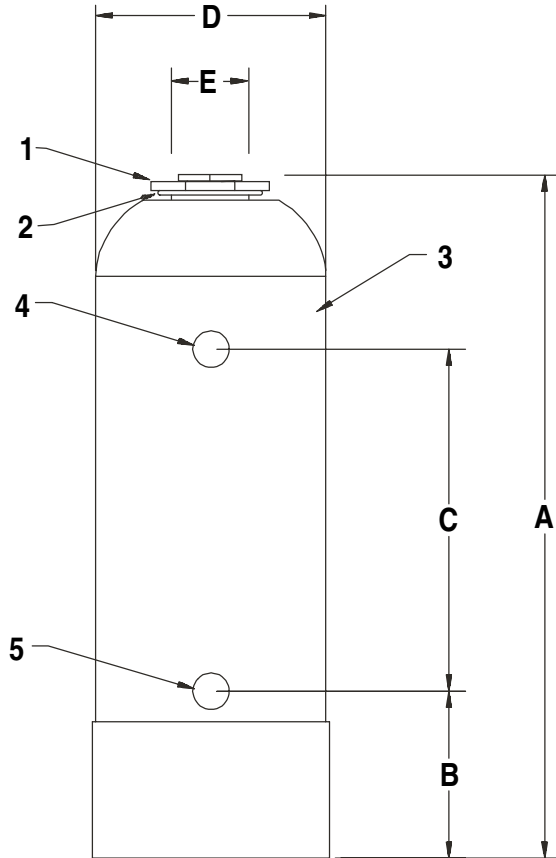
J.L. WINGERT CO.

P.O. Box 6207 • Garden Grove, CA 92846-6207 / 11800 Monarch Street • Garden Grove, CA 92841-2113
 Phone (714) 379-5519 • Fax (714) 379-5549 ■ Email: customerservice@jllwingert.com
 Northern California Region • Phone (510) 487-5310 ■ Southwest Region • Phone (602) 470-1015
 www.jllwingert.com

MANUFACTURING: Mixers, Bypass Feeders, Filter Feeders, Bromine Feeders, Sample Coolers, Sludge Traps, Separators, Separator Systems, Tank Stands, Tank Package Systems, Glycol Feed Systems, Coupon Racks, Control Stations, NEMA Enclosures, Custom Packaged Systems and Specialty Welding

Specification Sheet #032013 Rev. "A" (4/01)

FLAT BOTTOM FIBERGLASS FEEDERS



PARTS, MATERIALS AND SPECIFICATIONS:

KEY	PART	SPECIFICATIONS
1	3205	CLOSURE: 2 1/2" CPVC closure (O-ring included), 1" PVC plug (2 gallon model)
	3206	CLOSURE: 4" CPVC closure (O-ring included), 1" PVC plug (5 & 12 gallon model)
2		O-RING: EPDM
3		BODY: Fiberglass
4		OUTLET: 3/4" FNPT
5		INLET: 3/4" FNPT
MAX. PRESSURE		150 PSI (10.4 BAR)
MAX. TEMPERATURE		120° F (66° C)

FILL CAPACITY:

MODEL	GALLONS	LITERS	VOLUME
FRP-2	2.3	8.71	531 in ³
FRP-5	5.1	19.3	1,178 in ³
FRP-12	12.1	45.8	2,795 in ³

DIMENSIONS, CUBE AND WEIGHT:

KEY	FRP-2	FRP-5	FRP-12
A	18 7/8"	20 1/8"	41"
B	4 5/8"	5 3/8"	5 3/8"
C	9 3/8"	8"	28 7/8"
D	6 1/4"	10 1/8"	10 1/8"
E	2 1/2"	4"	4"
CUBE	6 1/2" X 6 1/2" X 20"	10 1/2" X 10 1/2" X 21"	10 1/2" X 10 1/2" X 41"
WEIGHT	7 lbs. (3.2 kgs.)	19 lbs. (8.6 kgs.)	46 lbs. (20.9 kgs.)

Note: All dimensions are +/- 1/8". All weights are approximate. All dimensions are subject to change without notice.