

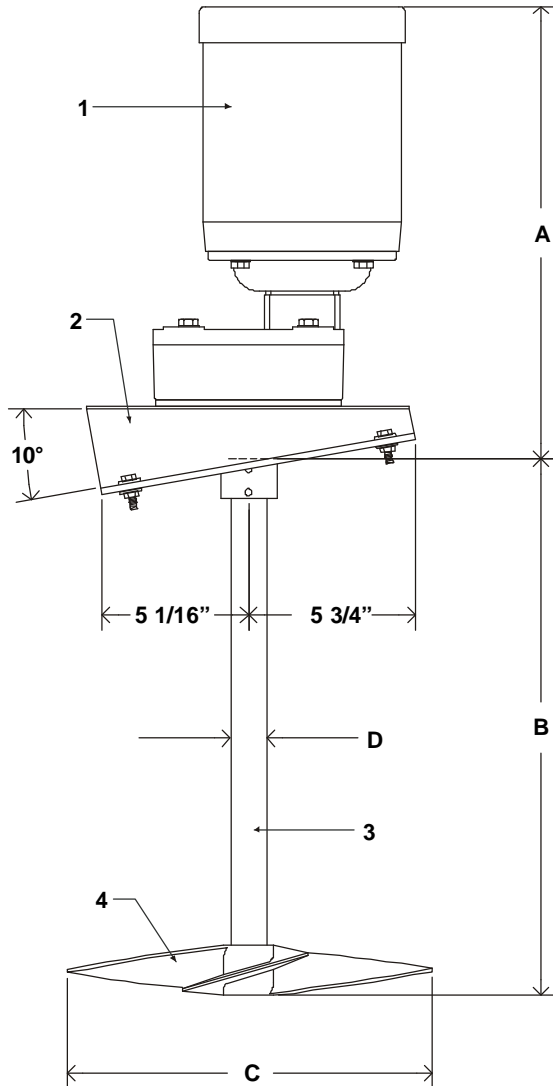
J.L. WINGERT CO.

P.O. Box 6207 • Garden Grove, CA 92846-6207 / 11800 Monarch Street • Garden Grove, CA 92841-2113
 Phone (714) 379-5519 • Fax (714) 379-5549 ■ Email: customerservice@jllwingert.com
 Northern California Region • Phone (510) 487-5310 ■ Southwest Region • Phone (602) 470-1015
 www.jllwingert.com

MANUFACTURING: Mixers, Bypass Feeders, Filter Feeders, Bromine Feeders, Sample Coolers, Sludge Traps, Separators, Separator Systems, Tank Stands,
 Tank Package Systems, Glycol Feed Systems, Coupon Racks, Control Stations, NEMA Enclosures, Custom Packaged Systems and Specialty Welding

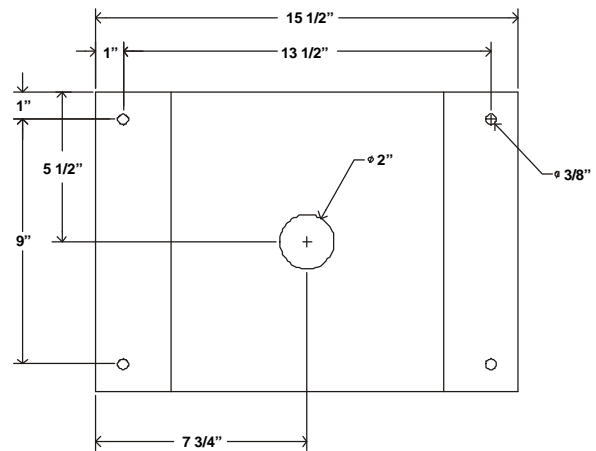
Specification Sheet #011010 Rev. "A" (4/01)

MODEL "WXL" 2 HP THRU 5 HP FIXED MOUNT MIXERS



SPECIFICATIONS:

| KEY | DESCRIPTION |
|-----|--|
| 1 | MOTOR: 2 HP thru 5 HP TEFC, with 350RPM gear reducer |
| 2 | MOUNT: Steel 10° angle mount riser |
| 3 | SHAFT: 1 1/4" D x 60" L, 316 stainless steel shaft |
| 4 | PROPELLER: 14" thru 16" 316 stainless steel marine style propeller |



MIXER MOUNT TEMPLATE

| POWER REQUIREMENTS: | WXL-70B | WXL-80B | WXL-90B |
|---------------------|--------------|--------------|---------------|
| Horsepower | 2 HP | 3 HP | 5 HP |
| 230/460V 3-∅ 60Hz | 12.4A / 6.2A | 17.6A / 8.8A | 26.8A / 13.4A |
| Air | 65CFM/70# | 125CFM/90# | |

DIMENSIONS & WEIGHT:

| KEY | WXL-70B | WXL-80B | WXL-90B |
|------------|-----------------|------------------|------------------|
| A | 17 3/8" | 17 5/8" | 17 3/4" |
| B | 60" | 72" | 72" |
| C (single) | 16" diameter | 16" diameter | 16" diameter |
| C (dual) | 14" diameter | 15" diameter | 15" diameter |
| D | 1 1/4" diameter | 1 1/4" diameter | 1 1/4" diameter |
| Weight | 95 lbs. approx. | 115 lbs. approx. | 125 lbs. approx. |

Note: All dimensions are +/- 1/8" and based on electric motors. All weights are approximate. All dimensions are subject to change without notice.