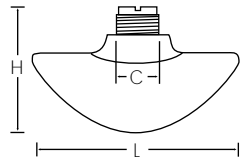


+GF+ SIGNET Plastic Installation Fittings

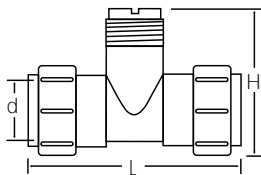
Fiberglass Glue-on Saddles



Part no.	Code	Size	L	H	o.d.	C
FPS030	159 000 441	3.00 in.	5.9	4.5	3.50	1.438
FPS040	159 000 442	4.00 in.	8.0	4.5	4.50	1.438
FPS060	159 000 443	6.00 in.	8.0	6.5	6.62	2.25
FPS080	198 801 417	8.00 in.	10.0	8.0	8.62	2.25
FPS100	159 000 444	10.0 in.	12.0	8.5	10.75	2.25
FPS120	159 000 445	12.0 in.	12.0	8.5	12.75	2.25

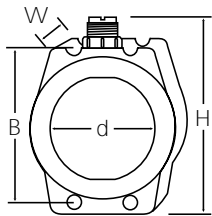
- C - Clearance dimension
- Up to 8 in. - PVDF insert, over 8 in. - PVC
- Mounts on fiberglass pipe

Metric PP Union Tee Fittings



Part no.	Code	DN	L	H	d
PPMT005	198 150 522	15 mm	128	97	20
PPMT007	198 150 523	20 mm	142	105	25
PPMT010	198 150 524	25 mm	156	110	32
PPMT012	198 150 525	32 mm	160	120	40
PPMT015	198 150 526	40 mm	176	130	50
PPMT020	198 150 527	50 mm	194	146	63

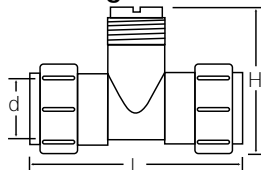
Metric PP Wafer Fittings



Part no.	Code	DN	W	H	d	B
PPMT025	198 150 560	65 mm	46	175	75	142
PPMT030	198 150 561	80 mm	49	194	90	160
PPMT040	198 150 562	100 mm	56	220	110	186
PPMT050	198 150 563	125 mm	64	265	140	215
PPMT060	198 150 564	150 mm	70	297	160	240
PPMT080	198 150 565	200 mm	71	352	225	297

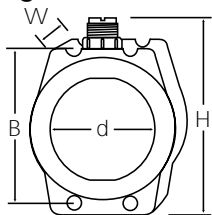
- Not compatible with 8000 series transmitters

Metric PVDF Union Tee Fittings



Part no.	Code	DN	L	H	d
SFMT005	198 150 529	15 mm	128	97	20
SFMT007	198 150 530	20 mm	142	105	25
SFMT010	198 150 531	25 mm	156	110	32
SFMT012	198 150 532	32 mm	160	120	40
SFMT015	198 150 533	40 mm	176	130	50
SFMT020	198 150 534	50 mm	194	146	63

Metric PVDF Wafer Fittings

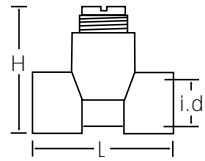


Part no.	Code	DN	W	H	d	B
SFMT025	198 150 571	65 mm	46	175	75	142
SFMT030	198 150 697	80 mm	49	194	90	160
SFMT040	198 150 573	100 mm	56	220	110	186
SFMT050	198 150 574	125 mm	64	265	140	215
SFMT060	198 150 575	150 mm	70	297	160	240
SFMT080	198 150 576	200 mm	71	352	225	297

- Not compatible with 8000 series transmitters

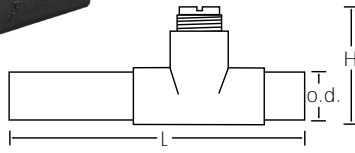
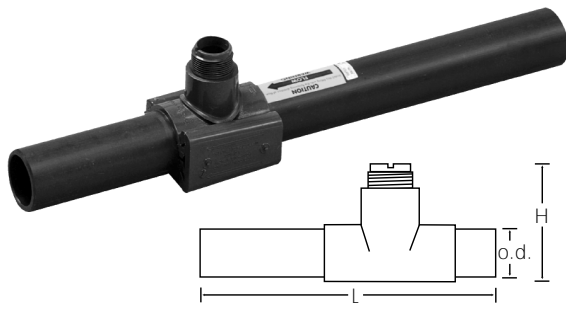
+GF+ SIGNET Plastic Installation Fittings

PVC TEES SCH 80 - Fitting only



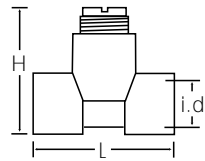
Part no.	Code	Size	L	H	i.d.
PV8T005F	159 000 527	0.50 in.	3.75	3.6	.85
PV8T007F	159 000 529	0.75 in.	3.75	3.8	1.06
PV8T010F	159 000 531	1.00 in.	4.26	4.0	1.33
PV8T012F	159 000 533	1.25 in.	4.36	4.4	1.67
PV8T015F	159 000 535	1.50 in.	4.90	4.6	1.91

PVC TEES SCH 80 - With Pipe



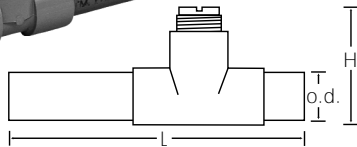
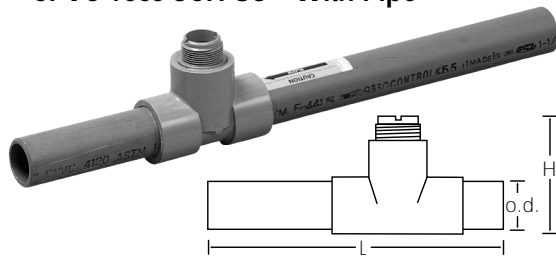
Part no.	Code	Size	L	H	o.d.
PV8T005	159 000 526	0.50 in.	14	3.6	0.840
PV8T007	159 000 528	0.75 in.	14	3.8	1.050
PV8T010	159 000 530	1.00 in.	17	4.0	1.315
PV8T012	159 000 532	1.25 in.	20	4.4	1.660
PV8T015	159 000 534	1.50 in.	24	4.6	1.900
PV8T020	198 801 415	2.00 in.	24	5.0	2.375
PV8T025	198 801 573	2.50 in.	24	5.4	2.875
PV8T030	198 801 416	3.00 in.	24	6.0	3.500
PV8T040	198 801 436	4.00 in.	24	7.0	4.500

CPVC Tees SCH 80 - Fitting only



Part no.	Code	Size	L	H	i.d.
CPV8T005F	159 000 409	0.50 in.	3.75	3.6	.85
CPV8T007F	159 000 411	0.75 in.	3.75	3.8	1.06
CPV8T010F	159 000 413	1.00 in.	4.26	4.0	1.33
CPV8T012F	159 000 415	1.25 in.	4.36	4.4	1.67
CPV8T015F	159 000 417	1.50 in.	4.90	4.6	1.91

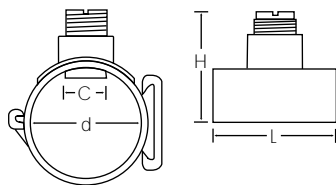
CPVC Tees SCH 80 - With Pipe



Part no.	Code	Size	L	H	o.d.
CPV8T005	159 000 408	0.50 in.	14	3.6	0.840
CPV8T007	159 000 410	0.75 in.	14	3.8	1.050
CPV8T010	159 000 412	1.00 in.	17	4.0	1.315
CPV8T012	159 000 414	1.25 in.	20	4.4	1.660
CPV8T015	159 000 416	1.50 in.	24	4.6	1.900

- Mounts on SCH 80 CPVC pipe

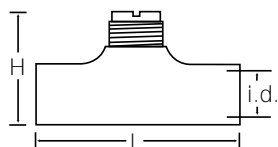
PVC Glue-on Saddles



Part no.	Code	Size	L	H	d	C
PV8S020	159 000 637	2.00 in.	4.00	5.0	2.375	1.43
PV8S025	159 000 638	2.50 in.	4.75	5.4	2.875	1.43
PV8S030	198 150 577	3.00 in.	5.00	6.0	3.500	1.43
PV8S040	198 150 578	4.00 in.	5.00	7.0	4.500	1.43
PV8S060	198 150 579	6.00 in.	5.00	10.0	6.625	2.25
PV8S080	159 000 639	8.00 in.	5.00	11.5	8.625	2.25

- Mounts on SCH 80 PVC pipe
- C - Clearance dimension

Fiberglass Glue-on Tees

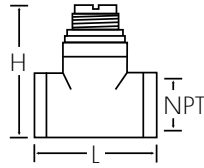


Part no.	Code	Size	L	H	i.d.
FPT015	159 000 446	1.50 in.	5.5	4.7	1.92
FPT020	159 000 447	2.00 in.	7.7	8.0	2.375

- PVDF insert - all sizes
- Mounts on fiberglass pipe

+GF+ SIGNET Metal Installation Fittings

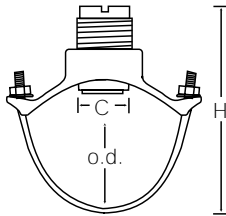
Galvanized Iron/Brass Threaded Tee with NPT Threads



Part no.	Code	Size	NPT	L	H
IR4TO10	159 000 448	1.00 in.	1.0	3.4	4.1
IR4TO12	159 000 449	1.25 in.	1.25	3.56	4.34
IR4TO15	159 000 450	1.50 in.	1.50	3.75	4.67
IR4TO20	159 000 451	2.00 in.	2.0	3.90	5.05
BR4TO10	159 000 642	1.00 in.	1.0	3.36	2.40
BR4TO12	159 000 643	1.25 in.	1.25	3.42	2.67
BR4TO15	159 000 644	1.50 in.	1.50	3.46	2.97
BR4TO20	159 000 645	2.00 in.	2.0	3.68	3.53

- PVDF insert - all sizes
- Mounts on SCH 40 metal pipe

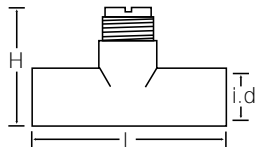
Iron Strap-on Saddle



Part no.	Code	Size	H	o.d min	o.d. max	C
IR8S020	159 000 452	2.00 in.	5.5	2.35	2.56	1.438
IR8S025	159 000 453	2.50 in.	5.5	2.44	2.91	1.438
IR8S030	159 000 454	3.00 in.	6.5	2.97	3.54	1.438
IR8S040	198 801 420	4.00 in.	7.5	3.74	4.55	1.438
IR8S050	159 000 455	5.00 in.	9.0	4.74	5.63	2.25
IR8S060	159 000 456	6.00 in.	10.5	5.94	6.70	2.25
IR8S080	159 000 457	8.00 in.	12.0	7.69	8.72	2.25
IR8S100	198 801 432	10.0 in.	18.0	10.64	12.12	2.25
IR8S120	159 000 458	12.0 in.	20.0	12.62	14.32	2.25

- C - Clearance dimension
- Up to 8 in.- PVDF insert, over 8 in. - PVC

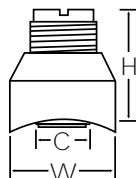
Copper/Bronze Sweat-on Tee



Part no.	Code	Size	L	H	i.d.
CUKT005	159 000 436	0.50 in.	3.15	3.57	0.617
CUKT007	159 000 437	0.75 in.	2.96	3.52	0.871
CUKT010	159 000 438	1.00 in.	3.23	3.80	1.124
CUKT012	159 000 439	1.25 in.	4.16	4.12	1.378
CUKT015	159 000 440	1.50 in.	4.43	4.34	1.627
CUKT020	198 801 418	2.00 in.	5.31	4.86	2.112

- No insert up to 1 in., over 1 in. - PVDF
- Mounts on copper pipe (Sch 40)
- Other schedules available upon request

Copper/Bronze Braze-on Brazolet

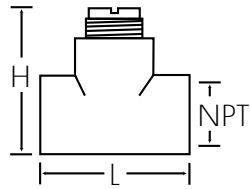


Part no.	Code	Size	W	H	C
BR4B025	159 000 396	2.5 in.	2.50	2.96	1.438
BR4B030	159 000 397	3.0 in.	2.55	2.90	1.438
BR4B040	159 000 398	4.0 in.	2.50	2.75	1.438
BR4B050	159 000 399	5.0 in.	3.50	3.98	2.25
BR4B060	159 000 400	6.0 in.	3.50	4.00	2.25
BR4B080	159 000 401	8.0 in.	3.50	4.00	2.25
BR4B100	159 000 402	10.0 in.	3.50	4.00	2.25
BR4B120	159 000 403	12.0 in.	3.50	7.00	2.25

- C - Clearance dimension
- Up to 8 in. - PVDF insert, over 8 in. - PVC insert
- Mounts on copper pipe

+GF+ SIGNET Metal Installation Fittings

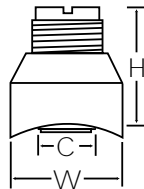
Carbon Steel Threaded Tees with NPT Threads



Part no.	Code	Size (NPT)	L	H
CS4T005	159 000 429	0.50 in.	3.6	4.0
CS4T007	159 000 430	0.75 in.	3.6	4.2
CS4T010	159 000 431	1.00 in.	3.6	4.2
CS4T012	159 000 432	1.25 in.	3.8	4.5
CS4T015	198 801 419	1.50 in.	4.1	4.8
CS4T020	159 000 433	2.00 in.	4.9	5.3

- PVDF insert - all sizes
- Mounts on SCH 40 metal pipe

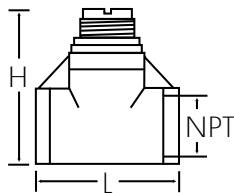
Carbon Steel Weld-on Weldolets



Part no.	Code	Size	H	W	C
CS4W025	159 000 434	2.50 in.	2.96	2.50	1.438
CS4W030	198 801 557	3.00 in.	2.90	2.55	1.438
CS4W040	198 801 552	4.00 in.	2.75	2.50	1.438
CS4W050	159 000 435	5.00 in.	3.98	3.50	2.25
CS4W060	198 801 553	6.00 in.	4.00	3.50	2.25
CS4W080	198 801 574	8.00 in.	4.00	3.50	2.25
CS4W100	198 801 575	10.0 in.	4.00	3.50	2.25
CS4W120	198 801 576	12.0 in.	7.00	3.50	2.25

- Up to 8 in.- PVDF insert, over 8 in. - PVC
- Mounts on SCH 40 metal pipe (Special order over 12 in.)
- C - Clearance dimension

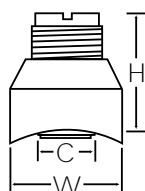
316 SS Threaded Tees with NPT Threads



Part no.	Code	Size (NPT)	L	H
CR4T005	198 801 554	0.50 in.	3.6	4.0
CR4T007	198 801 555	0.75 in.	3.6	4.2
CR4T010	198 801 556	1.00 in.	3.6	4.2
CR4T012	159 000 418	1.25 in.	3.8	4.5
CR4T015	198 801 784	1.50 in.	4.1	4.8
CR4T020	159 000 420	2.00 in.	4.9	5.3

- PVDF insert - all sizes
- Mounts on SCH 40 metal pipe

316 SS Weld-on Weldolets

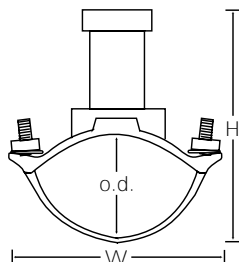


Part no.	Code	Size	H	W	C
CR4W025	159 000 421	2.50 in.	2.96	2.50	1.438
CR4W030	198 801 787	3.00 in.	2.90	2.55	1.438
CR4W040	198 801 788	4.00 in.	2.50	2.75	1.438
CR4W050	159 000 424	5.00 in.	3.98	3.50	2.25
CR4W060	198 801 790	6.00 in.	4.00	3.50	2.25
CR4W080	198 801 791	8.00 in.	4.00	3.50	2.25
CR4W100	198 901 792	10.0 in.	4.00	3.50	2.25
CR4W120	198 801 793	12.0 in.	7.00	3.50	2.25

- Up to 8 in. - PVDF insert, over 8 in. - PVC
- Mounts on SCH 40 metal pipe
- C - Clearance dimension

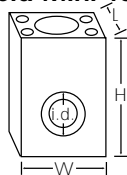
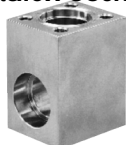
+GF+ SIGNET Metal Installation Fittings

Metalex Strap-On Saddle



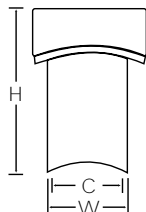
Part no.	Code	Size	H	W	o.d. min	o.d.
P526-1020	159 000 484	2.00 in.	7.0	5.5	2.35	2.56
P526-1025	159 000 485	2.50 in.	7.0	5.5	2.44	2.91
P526-1030	159 000 486	3.00 in.	7.5	6.0	2.97	3.54
P526-1040	159 000 487	4.00 in.	8.0	7.0	3.74	4.55
P526-1050	159 000 488	5.00 in.	10.0	8.0	4.74	5.63
P526-1060	159 000 489	6.00 in.	10.5	9.5	5.94	6.70
P526-1080	159 000 490	8.00 in.	12.75	12.0	7.69	8.72
P526-1100	159 000 491	10.0 in.	14.5	15.0	10.64	12.12
P526-1120	159 000 492	12.0 in.	17.0	17.0	12.62	14.32

Metalex Socket Weld Mini-Tap



Part no.	Code	Size	L	H	W	i.d.
P526-2005	198 840 501	0.50 in.	2.0	3.0	2.4	0.850
P526-2007	198 840 502	0.75 in.	2.0	3.0	2.4	1.060
P526-2010	198 840 503	1.00 in.	2.0	3.0	2.4	1.325

Metalex Weld-On Mini-Tap



Part no.	Code	Size	H	W	C
P526-2012	159 000 494	1.25 in.	2.25	1.66	1.062
P526-2015	198 840 506	1.50 in.	2.20	1.66	1.062
P526-2020	159 000 495	2.00 in.	2.17	1.66	1.062
P526-2025	159 000 496	2.50 in.	2.10	1.66	1.062
P526-2030	159 000 497	3.00 in.	2.0	1.66	1.062
P526-2040	159 000 498	4.00 in.	1.95	1.66	1.062
P526-2050	159 000 499	5.00 in.	1.83	1.66	1.062
P526-2060	159 000 500	6.00 in.	1.75	1.66	1.062
P526-2080	159 000 501	8.00 in.	1.56	1.66	1.062
P526-2100	159 000 502	10.0 in.	1.35	1.66	1.062
P526-2120	159 000 503	12.0 in.	1.15	1.66	1.062

Fitting Accessories

Part no.	Code	Description
P31515-0V200	159 000 459	Pipe Adapter Insert, PVDF
P31515-0C200	159 000 631	Pipe Adapter Insert, CPVC
P31515-0P200	159 000 630	Pipe Adapter Insert, PVC
P315520-1V	159 000 460	Pipe Adapter Insert
P31520-2P	159 000 461	Pipe Adapter Insert
P31536	198 840 201	Sensor Plug, Polypro
P31536-2	159 000 649	Sensor Plug, PVDF
P31671-1	159 000 465	Insert, PVDF 1.5 in.



FOR YOUR SAFETY: Always confirm the chemical compatibility and the maximum pressure/temperature specifications for fitting and sensor selection prior to purchase. Failure to do so may result in property damage and/or serious personal injury.